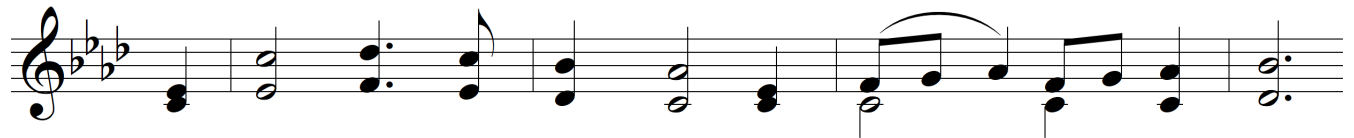


ANDANTINO 11, 11, 11, 11

Samuel W. Beazley



Refrain



ANDANTINO 11, 11, 11, 11

The image displays a musical score for a piece titled "ANDANTINO 11, 11, 11, 11". The score is arranged in three systems, each consisting of a treble and bass staff. The key signature is three flats (B-flat, E-flat, A-flat), and the time signature is 4/4. The music is characterized by a slow, steady tempo and a focus on harmonic structure. The first system features a treble staff with a melodic line of quarter and eighth notes, and a bass staff with a harmonic accompaniment of chords and moving lines. The second system continues this pattern, with the treble staff showing a more active melodic line. The third system concludes the piece with a final cadence in both staves, marked by a double bar line.