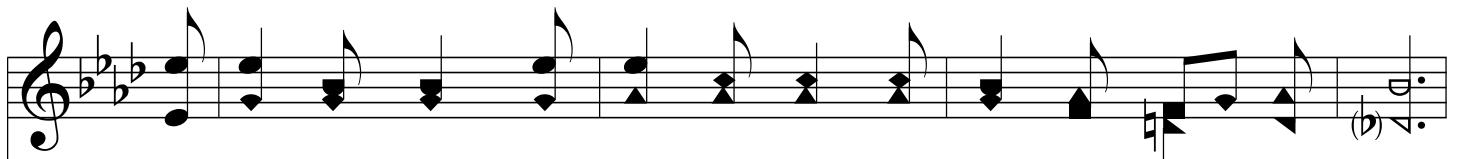


Jesús Es Todo Para Mí *Jesus Is All The World To Me*

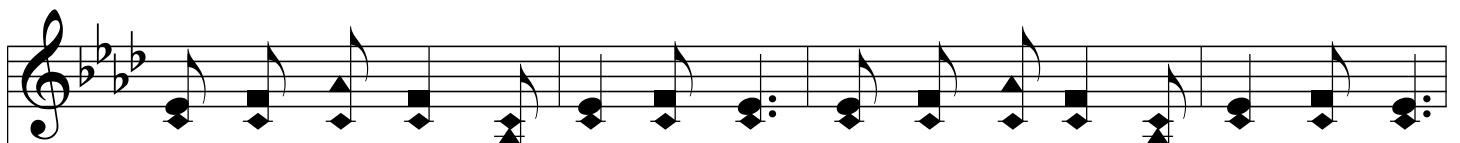
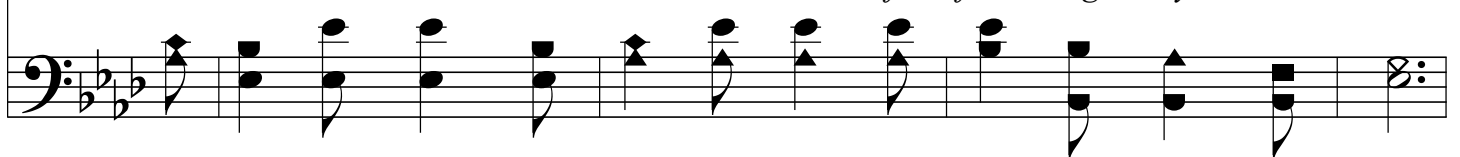
Ab/C - MI



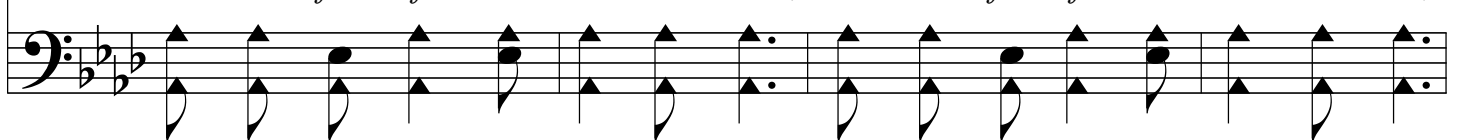
1. Cris - to_el Se - ñor es pa - ra mí, Con - sue - ló, di - cha_y paz;
 2. En mis con - flic - tos con el mal, No hay_u - no cual Je - sús,
 3. Vi - da de paz, de go - zo_y luz, En - cuen - tro_en mi Se - ñor;
*1. Je - sus is all the world to me, My life, my joy, my all;
 2. Je - sus is all the world to me, My Friend in tri - als sore;
 3. Je - sus is all the world to me, I want no bet - ter Friend;*



En él tan só - lo_en - cuen - tro yo, Des - can - só,_a - mor, so - laz.
 Que pue - da dar - me pro - tec - ción, Sos - tén po - der y luz.
 He - ren - cia_e - ter - na que me da, Su in - com - pa - ra - ble_a - mor.
*He is my strength from day to day With - out Him I would fall.
 I go to Him for bless - ings, and He gives them o'er and o'er.
 I trust Him now, I'll trust Him when Life's fleet - ing days shall end.*



Si en mis tris - te - zas voy a_él, Ha - llo_un a - mi - go siem - pre fiel,
 Yen - do con - mi - go_el Sal - va - dor, Ya na - da pue - de_el ten - ta - dor,
 Na - da en_el mun - do_i - gua - la - rá, A lo_que en Cris - to_en - con - tra - rá,
*When I am sad to Him I go; No oth - er one can cheer me so;
 He sends the sun - shine and the rain; He sends the har - vest's gold - en grain;
 Beau - ti - ful life with such a Friend, Beau - ti - ful life that has no end;*



Jesús Es Todo Para Mí

Jesus Is All The World To Me

ff *pp*

The image shows a musical score for the hymn 'Jesus Is All The World To Me'. It consists of two staves: a treble clef staff at the top and a bass clef staff at the bottom. The treble staff contains the vocal melody, starting with a treble clef, a key signature of two flats (B-flat and E-flat), and a 4/4 time signature. The melody is written in a simple, hymn-like style with quarter and eighth notes. The bass staff contains the bass line, starting with a bass clef and the same key signature and time signature. The bass line is written in a simple, hymn-like style with quarter and eighth notes. The lyrics are written in Spanish, English, and Spanish again. The Spanish lyrics are: 'Ha - llo_un a - mi - go siem - pre fiel, En Je - sús. Ya na - da pue - de_el ten - ta - dor, Con - tra mí. A lo_que en Cris - to_en - con - tra - rá, El mor - tal.' The English lyrics are: 'When I am sad He makes me glad: He's my Friend. Sun - shine and rain, har - vest of grain, He's my Friend. E - ter - nal life, e - ter - nal joy: He's my Friend.' The score ends with a double bar line and repeat dots.

Ha - llo_un a - mi - go siem - pre fiel, En Je - sús.
Ya na - da pue - de_el ten - ta - dor, Con - tra mí.
A lo_que en Cris - to_en - con - tra - rá, El mor - tal.
When I am sad He makes me glad: He's my Friend.
Sun - shine and rain, har - vest of grain, He's my Friend.
E - ter - nal life, e - ter - nal joy: He's my Friend.