

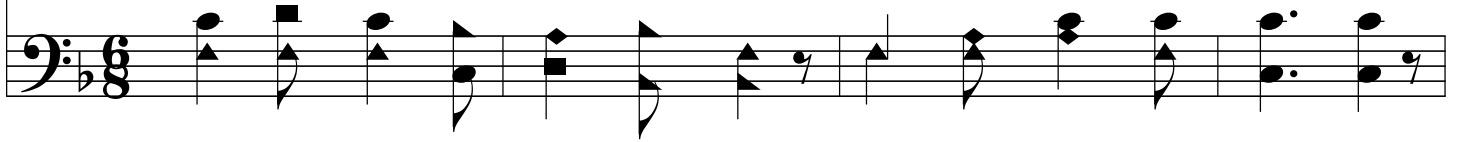
En Jesús, Mi Salvador

Near The Cross

F/A - MI



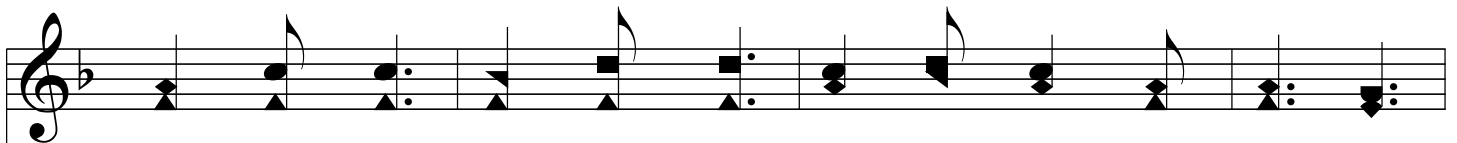
1. Le - jos de mi Pa - dre Dios Por Je - sús fuí ha - lla - do,
2. En Je - sús, mi Sal - va - dor, Pon - go mi con - fian - za;
3. Cer - ca de mi buen Pas - tor, Vi - vo ca - da dí - a;
4. Guár - da - me, Se - ñor Je - sús, Pa - ra que uno cai - ga;
*1. Je - sus, keep me near the cross; There a pre - cious foun - tain,
2. Near the cross, a trem - bling soul, Love and mer - cy found me;
3. Near the cross! O Lamb of God, Bring its scenes be - fore me;
4. Near the cross I'll watch and wait, Hop - ing, trust - ing, ev - er,*



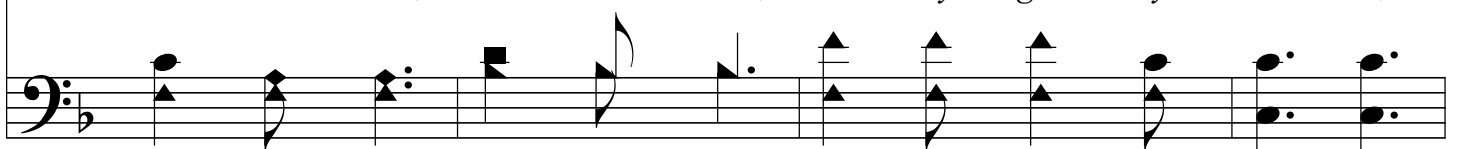
Por su gra - cia y por su a - mor Só - lo fuí sal - va - do.
To - da mi ne - ce - si - dad, Su - ple en a - bun - dan - cia.
To - da gra - cia en su Se - ñor, Ha - lla el al - ma mí - a.
Co - mo un sar - mién - to en la vid, Vi - da de tí trai - ga.
*Free to all, a heal - ing stream, Flows from Cal - v'ry's moun - tain.
There the bright and Morn - ing Star Sheds its beams a - round me.
Help me walk from day to day With its shad - ows o'er me.
Till I reach the gold - en strand, Just be - yond the riv - er.*



Coro/Chorus



En Je - sús, mi Se - ñor, Sea mi glo - ria e - ter - na;
In the cross, in the cross, Be my glo - ry ev - er;



En Jesús, Mi Salvador

Near The Cross

The image shows a musical score for the hymn 'En Jesús, Mi Salvador'. It consists of two staves: a treble clef staff on top and a bass clef staff on the bottom. The key signature has one flat (B-flat), and the time signature is 4/4. The melody is written in the treble clef, and the bass line is in the bass clef. The lyrics are written below the treble staff.

El me_a - mó y me sal - vó, En su gra - cia tier - na.
Till my rap - tured soul shall find Rest be - yond the riv - er.