

When The Harvest All Is In

A \flat



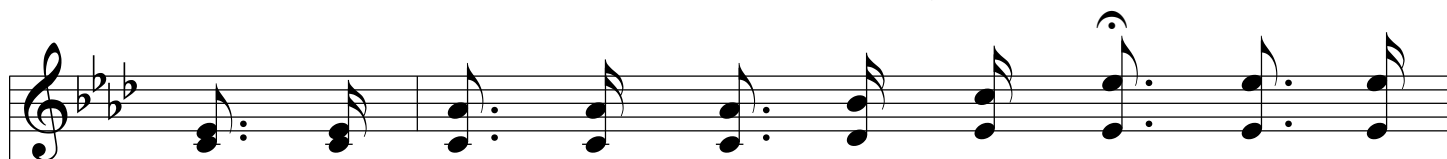
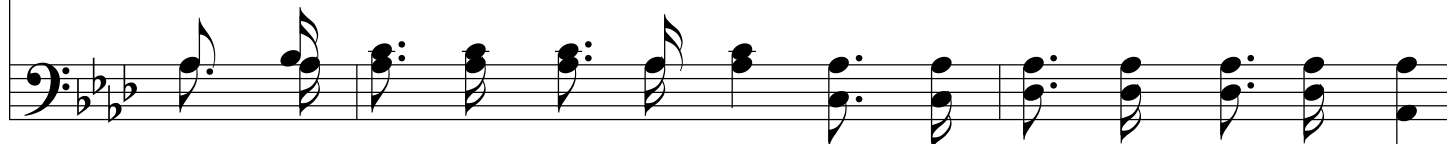
1. Would you stand a - mong the toil - ers, When the har - vest all is in?
2. Would you join the song of glad - ness, When the har - vest all is in?
3. Would you have some sheaves to of - fer, When the har - vest all is in?
4. Would you have a crown e - ter - nal, When the har - vest all is in?



For the bless - ed Lord and Mas - ter, You must here the work be - gin.
You must be a faith - ful glean - er In the haunts of woe and sin.
From the husks of want and fol - ly, Strive the prod - i - gals to win.
Seek to swell the heav'n - ly gar - ner, Ere it be too late to glean.



When the har - vest all is in, When the har - vest all is in,



What a meet - ing of the reap - ers, What a



When The Harvest All Is In

shout - ing of ho - san - nas, When the har - vest all is in.

The image shows a musical score for the hymn "When The Harvest All Is In". It consists of two staves. The top staff is a vocal line in treble clef, and the bottom staff is a bass line in bass clef. Both staves are in the key of B-flat major (two flats) and 4/4 time. The vocal line features a melody of eighth and quarter notes with lyrics underneath. The bass line provides a harmonic accompaniment with chords and moving lines. The lyrics are: "shout - ing of ho - san - nas, When the har - vest all is in."