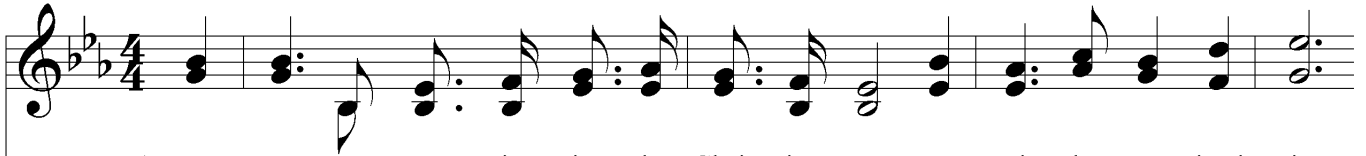


We Shall Run And Be Weary

Is. 40:31



1. I now am run - ning in the Chris - tian race, To gain the prom - ised prize;
2. We'll run and nev - er fal - ter by the way, For Je - sus' word is true;
3. I'll stand up - on His word and prove His pow'r, The Rock of Ag - es past;
4. The heav - y weights of sin are laid a - side, My heart is free and light;
5. When life is o'er and la - bor here is done, Can we thus say with Paul?—



Thru Je - sus' match - less, sav - ing, keep - ing grace, We'll crown Him in the skies.
He's prom - ised if we ev - er will o - bey, To bring us safe - ly thru.
I know He'll keep me, trust - ing ev - 'ry hour, While life on earth shall last.
There's noth - ing we may fear which can be - tide Our hope is clear and bright.
"I've fought the fight and there's a star - ry crown," That's wait - ing for us all.



Chorus



We shall run and not be wea - ry,
We shall run and not be wea - ry, we shall walk and nev - er faint;



We shall walk and nev - er faint We're
We shall run and not be wea - ry, we shall walk and nev - er faint,



We Shall Run And Be Weary

trav - 'ling to our hap - py home, We'll walk and nev - er faint. nev - er faint.

The image shows a musical score for the hymn "We Shall Run And Be Weary". It consists of two staves: a treble clef staff on top and a bass clef staff on the bottom. The key signature is one flat (B-flat major or D minor), and the time signature is 4/4. The melody is written in the treble clef, and the bass line is in the bass clef. The lyrics are: "trav - 'ling to our hap - py home, We'll walk and nev - er faint. nev - er faint." The music features a mix of eighth and sixteenth notes, with some chords and rests. The piece ends with a double bar line.