

Try To Be A Blessing

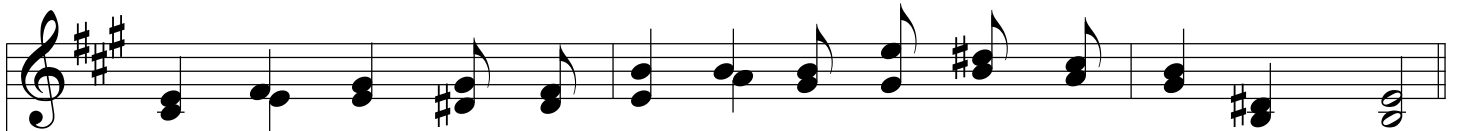
A



1. Try to be a bless - ing ev - 'ry - where you go, Do - ing good like
2. Try to be a bless - ing to the care - less throng, Brave - ly stand for
3. Try to be a bless - ing where there's pain and woe, Car - ry love's sweet
4. Try to be a bless - ing, do not long - er wait, Life is swift - ly



Je - sus, and His spir - it show, Speak - ing words of kind - ness, words of
Je - sus, show where you be - long; Let them see the beau - ty of a
mes - sage ev - 'ry where you go, Tell the lost of Je - sus, cheer the
pass - ing, soon 'twill be too late, Keep the gos - pel ban - ner o - ver



hope and cheer, Mak - ing oth - ers hap - py while you jour - ney here.
life of love, Al - ways live for Je - sus, and the home a - bove.
sad and lone, Free - ly help the need - y, as the Lord has shown.
you un - furled, Live to hon - or Je - sus, and to bless the world.



Chorus



Try to be a bless - ing, if like Je - sus you would be, Help - ing souls a - round you His sal -



Try To Be A Blessing

va - tion here to see; Try to Try to be a bless - ing if a
heav'n - ly crown you'd wear, Decked with shin - ing stars you've won for Je - sus here.

The image shows a musical score for the song "Try To Be A Blessing". It consists of two systems of music. Each system has a vocal line (treble clef) and a piano accompaniment line (bass clef). The key signature is three sharps (F#, C#, G#) and the time signature is 4/4. The lyrics are: "va - tion here to see; Try to Try to be a bless - ing if a heav'n - ly crown you'd wear, Decked with shin - ing stars you've won for Je - sus here." The piano accompaniment features a steady bass line with chords that support the vocal melody.