

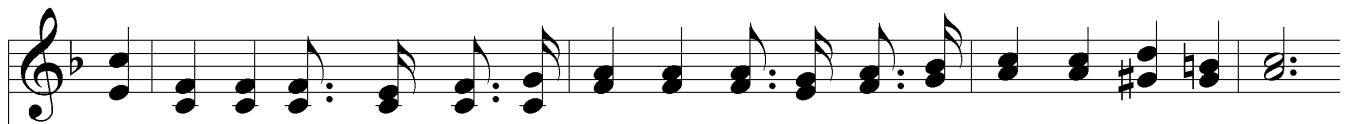
Ship Ahoy!



1. We're sail - ing, sail - ing o - ver life's great sea, And oth - er ships are pass - ing by;
2. Lift up the bea - con that shall guide the lost Un - to the ha - ven bright and fair;
3. We're sail - ing, sail - ing o - ver life's great sea, And not a - lone our way we take;



The might - y Sav - ior shall our Cap - tain be, His star is shin - ing in the sky.
O help the wan - d'ring and the tem - pest - tossed, That peace and shel - ter they may share.
For oth - ers, sail - ing, look to you and me! O help them for the Mas - ter's sake!



But while in safe - ty we may glide a - long, Led by the Light that nev - er fails,
O bring the ship - wrecked to the Life - boat true, Our Ref - uge in the wild - est storm;
The po - lar star of mer - cy shines a - bove, Our an - chor holds for - ev - er more;



O hear the cry that ris - es full and strong From those who strug - gle with the gales.
Sing out with glad - ness and with hope a - new, Our Cap - tain will His word per - form.
And dear ones wait, with joy - ful songs of love, To greet us on the gold - en shore.



Ship Ahoy!

Chorus

The musical score for the chorus of 'Ship Ahoy!' is presented in two systems. Each system consists of a vocal line (treble clef) and a piano accompaniment line (bass clef). The key signature is one flat (B-flat), and the time signature is 4/4. The first system of music includes the lyrics: 'Ship a-hoy! Hear the cry! "God save them," we fer-vent-ly pray! Ship a-hoy! Hear the cry! Hear the cry!'. The second system includes the lyrics: 'Ship a-hoy! Hear the cry! O haste to the res-cue to - day! Ship a-hoy! Hear the cry! haste to-day!'. The piano accompaniment features a steady bass line with chords that support the vocal melody.

Ship a-hoy! Hear the cry! "God save them," we fer-vent-ly pray!
Ship a-hoy! Hear the cry! Hear the cry!

Ship a-hoy! Hear the cry! O haste to the res-cue to - day!
Ship a-hoy! Hear the cry! haste to-day!