

Meet Me There



1. On the hap - py, gold - en shore, where the faith - ful part no more, When the
 2. Here our fond - est hopes are vain, dear - est links are rent in twain, But in
 3. Where the songs of an - gels ring, and the blest for - ev - er sing, In the



storms of life are o'er meet me there, Where the night dis - solves a - way
 heav'n no thro' of pain meet me there, By the riv - er spark - ling bright
 pal - ace of the King, meet me there, Where in sweet com - mun - ion blend



D.S.— When the storms of life are o'er,



in - to pure and per - fect day, I am go - ing home to stay,
 in the cit - y of de - light, Where our faith is lost in sight,
 heart with heart, and friend with friend, In a world that ne'er shall end,

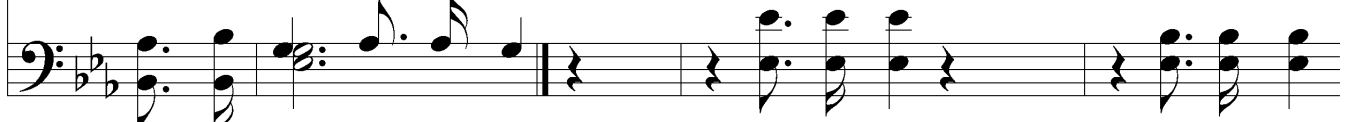


on the hap - py, gold - en shore, Where the faith - ful part no more,

Fine Chorus



meet me there. Meet me there, meet me there,
 meet me there. Meet me there, meet me there,
 meet me there. meet me there.



meet me there.

Meet Me There

D.S. al Fine

Where the tree of life is bloom - ing, meet me there,
meet me there,

The image shows a musical score for the hymn 'Meet Me There'. It consists of two staves: a treble clef staff at the top and a bass clef staff at the bottom. The key signature is one flat (B-flat major or D minor), and the time signature is 4/4. The melody is written in the treble staff, and the bass line is in the bass staff. The lyrics are placed between the two staves. The piece concludes with a double bar line and the instruction 'D.S. al Fine'.