

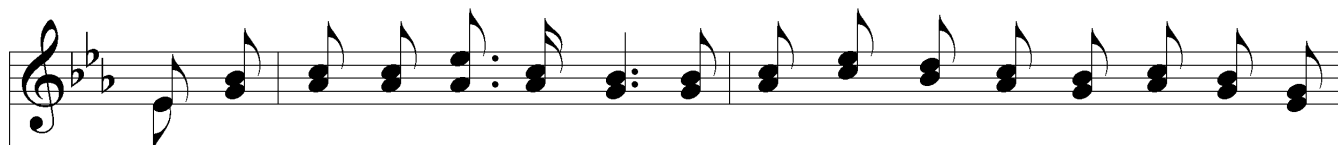
# I Am His— He Is Mine



1. I have a Sav - ior love is more than all the world to me; His name I  
2. When clouds of sor - row hide the sky, and hope is long de - layed, I hear His  
3. O why not take my Sav - ior, friend, to be your Sav - ior, too? No oth - er



love, His praise I sing wher - ev - er I may be; He gave His life to save me  
voice so sweet - ly whis - per, "Child be not a - fraid," He's with me where - so - e'er I  
friend is half so dear, so con - stant, tried or true; Be - hold Him stand - ing at the



when I had no oth - er friend, He loved me in my hour of need and  
go, He keeps me night and day, He leads and, guides me, cheers and helps me  
door - will you not let Him in? O hear Him plead - ing while He waits to



## Chorus



loved me to the end.  
on my home - ward way. I'll sing His won - drous love 'Till in the courts a - bove I  
take a - way thy sin.



## *I Am His— He Is Mine*

join the glad im-mor-tals in their song di - vine; His praise my song shall  
im-mor - tals in their song di-vine, for O His praise my song shall

be Thru - out e - ter - ni - ty, For, O I know that I am His and He is mine.

The image shows a musical score for the hymn "I Am His— He Is Mine". It consists of two systems of music. Each system has a vocal line (treble clef) and a piano accompaniment line (bass clef). The key signature is B-flat major (two flats). The first system contains the first two lines of lyrics. The second system contains the final line of lyrics. The music is written in a standard notation style with notes, rests, and bar lines.