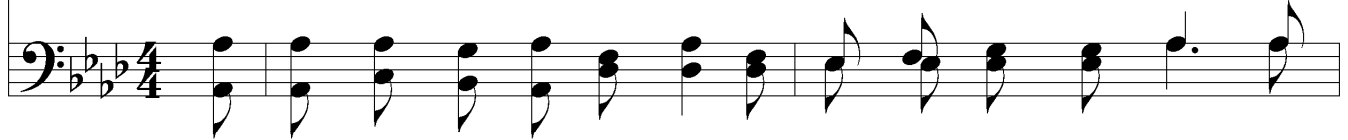


He Never Has Failed Me



1. In sun - shine and in shad - ow, I have a change - less friend, Whose
2. O when the storm is rag - ing, I'll look to Him a - bove, I'll
3. O don't you know this Sav - ior to be your ver - y own? Turn



love is ev - er - last - ing, whose mer - cies have no end; And since He died to
call up - on my Sav - ior, and trust His sav - ing love; He'll keep me thru the
now in faith to Je - sus, the Lamb up - on the throne; When - e'er a con - trite



save me, my ev - 'ry need He'll fill He nev - er yet has failed me,
tem - pest, or bid the waves! "be still," He nev - er yet has failed me,
sin - ner has come to Zi - on's hill, Christ nev - er yet has failed him,



I know He nev - er will.
I know He nev - er will. He nev - er yet has failed me, O no! O no! All
I know He nev - er will.



He Never Has Failed Me

The image shows a musical score for the hymn "He Never Has Failed Me". It consists of two systems of music, each with a vocal line and a piano accompaniment line. The key signature is three flats (B-flat, E-flat, A-flat) and the time signature is 4/4. The first system contains the lyrics: "glo - ry to my Sav - ior who loves me so: For ev - 'ry pre - cious prom - ise He". The second system contains the lyrics: "sure - ly will ful - fill - He nev - er yet has failed me, I know He nev - er will." The piano accompaniment features a steady bass line with chords and some melodic movement. The vocal line is a simple melody. A "Rit..." marking is placed above the vocal line in the second system, indicating a ritardando. The score ends with a double bar line.

glo - ry to my Sav - ior who loves me so: For ev - 'ry pre - cious prom - ise He

Rit...

sure - ly will ful - fill - He nev - er yet has failed me, I know He nev - er will.