

He Keepeth Me, Ever

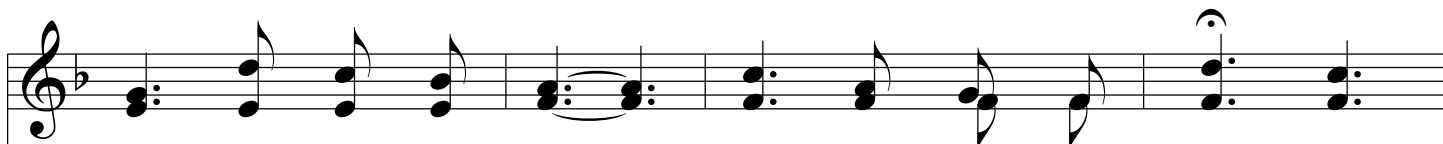
F



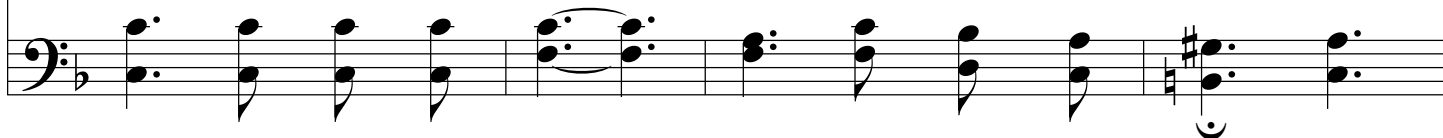
1. He keep - eth me, ev - er, Wher - e'er be the place! I've on - ly to
2. He keep - eth me, ev - er, With ten - der - est care! I've on - ly to
3. He keep - eth me, ev - er, From yield - ing to dread, Tho' dark - ness be



ask it - Most won - der - ful grace! Tho' sor - est temp - ta - tions
ask Him My bur - dens to bear! A word of His prom - ise
round me, And clouds o - ver - head! He still - eth my doubt - ings,



My spir - it may try, I know my Re - deem - er
He nev - er will break! Who - ev - er may leave me,
He light - ens my grief! I've on - ly to trust Him -



Chorus



Will ev - er be nigh!
He ne'er will for - sake! He keep - eth me, ev - er! His love end - eth
He'll give me re - lief!



He Keepeth Me, Ever

nev - er! From Him, naught shall sev - er! He keep - eth my soul!

The image shows a musical score for the hymn "He Keepeth Me, Ever". It consists of two staves: a treble clef staff on top and a bass clef staff on the bottom. The treble staff contains the melody, which begins with a treble clef, a key signature of one flat (B-flat), and a common time signature. The melody starts on a whole note chord (F2, A2), followed by a half note chord (F2, A2), then a quarter note chord (F2, A2), and continues with various rhythmic patterns including eighth and sixteenth notes. The bass staff provides a harmonic accompaniment, starting with a whole note chord (F2, A2), followed by a half note chord (F2, A2), and then a series of chords and single notes. The lyrics "nev - er! From Him, naught shall sev - er! He keep - eth my soul!" are written below the treble staff, aligned with the notes. The piece concludes with a double bar line.