

Come Unto Me



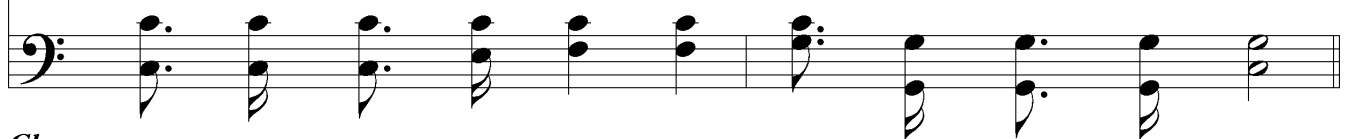
1. Hear the bless-ed Sav - ior call - ing the op-pressed, "O ye heav - y la - den,
2. Are you dis - ap - point - ed, wan-d'ring here and there, Drag-ging chains of doubt and
3. Have you by temp - ta - tion of - ten con-quer'd been, Has a sense of weak-ness



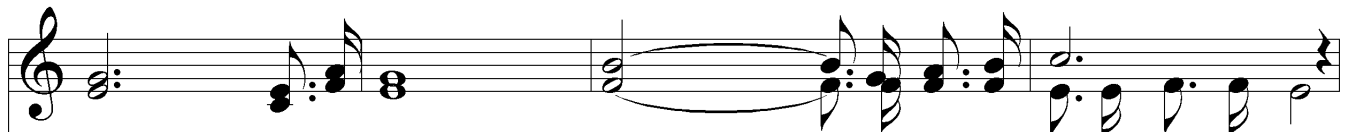
come to me and rest; Come, no long - er tar - ry, I your load will bear,
load - ed down with care? Do un - ho - ly feel - ings strug - gle in your breast?
brought dis - tress with - in? Christ will sanc - ti - fy you, if you'll claim His best,



Bring me ev - 'ry bur - den, bring me ev - 'ry care."
Bring your case to Je - sus, He will give you rest.
In the Ho - ly Spir - it, He will give you rest.



Chorus



Come un - to me, I will give your rest;
Come un-to me, come un - to me, I will give you rest, I will give you rest;



Come Unto Me

Take my yoke up - on you, Hear me and be
Take my yoke up-on you, Take my yoke up-on you, Hear me and be blest,

The first system of the hymn features a treble clef staff with a melody of eighth and sixteenth notes, and a bass clef staff with a steady accompaniment of eighth notes. The lyrics are positioned between the two staves.

blest;
hear me and be blest, For I am meek and low - ly, I am meek and low - ly;

The second system continues the melody and accompaniment. The lyrics are split across two lines, with the first line starting below the treble staff and the second line starting below the bass staff.

Come and trust my might; Come, my yoke is
Come and trust my might, Come and trust my might; Come, O come,

The third system features a treble clef staff with a melody and a bass clef staff with an accompaniment. The lyrics are placed between the staves.

eas - y, And my bur - den's light.
Come, my yoke is eas - y, Come, O come, yes, Come, my bur - den's light.

The fourth system concludes the hymn with a treble clef staff and a bass clef staff. The lyrics are positioned between the staves.