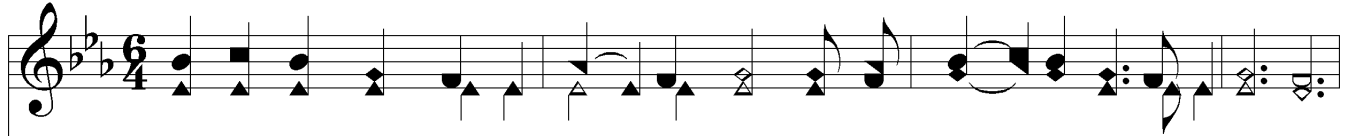


Will You Crown Or Crucify Jesus?



1. This is the ques - tion that you must face- Will you crown or cru-ci - fy Je-sus?
 2. Will you con - tin - ue in sin's dark night? Will you crown or cru-ci - fy Je-sus?
 3. No neu-tral ground can you take to - day, You must crown or cru-ci - fy Je-sus;
 4. Sav - ior, I'm leav - ing the path of sin, I will crown, not cru-ci - fy Je-sus;



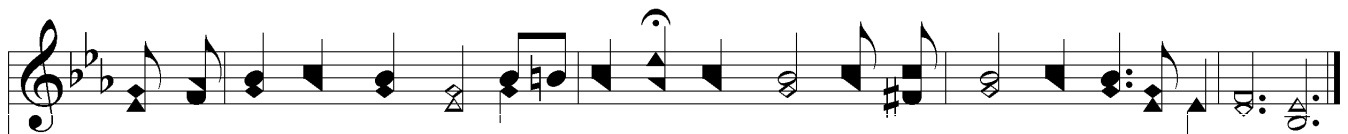
Will you ac - cept or re - ject His grace? Will you crown or cru-ci - fy Je-sus?
 Or will you turn to the Gos - pel light? Will you crown or cru-ci - fy Je-sus?
 You must ac - cept Him or turn Him a - way, You must crown or cru-ci - fy Je-sus.
 Trust - ing in Thee, I have peace with - in, I will crown, not cru-ci - fy Je-sus.



Chorus



1-3. Will you crown or cru - ci - fy Je - sus? Will you crown or cru - ci - fy Je - sus?
 4. I will crown, not cru - ci - fy Je - sus, I will crown, not cru - ci - fy Je - sus;



Will you let Him come in, or die in your sin? Will you crown or cru-ci - fy Je-sus?
 I will live by His side, I'll fol-low His guide, I will crown, not cru-ci - fy Je-sus.

