

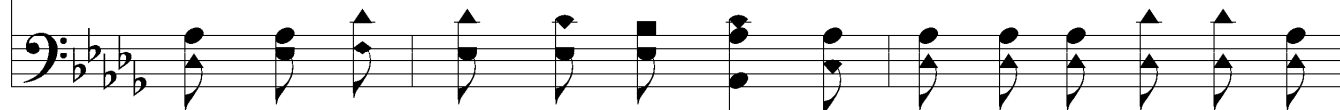
To Whom Shall We Go?



1. To whom shall we go with our bur - dens of sin, For mer - cy and
2. To whom shall we go with our wea - ri - some care, When baf - fled and
3. To whom shall we go when our ros - es are dead, When shad - ows brood
4. To whom shall we go when our hearts have grown cold, When, lured by the



par - don, for grace to make clean, For love that will pit - y and
beat - en, al - most we de - spair, When long - ing for some - one our
o - ver the path we may tread, When treas - ures are tak - en, when
tempt - er we've strayed from the fold? Whose love will re - ceive us a -



gath - er us in, To whom shall we go but to Je - sus?
trou - bles to share, To whom shall we go but to Je - sus?
com - forts have fled, To whom shall we go but to Je - sus?
gain as of old? To whom shall we go but to Je - sus?



Chorus



There is but One, none oth - er One who is more than broth - er; Friend true and



To Whom Shall We Go?



ten - der, Al - might - y De - fend - er, There's no one can save but Je - sus.

Rit...

The image shows a musical score for the hymn "To Whom Shall We Go?". It consists of two staves: a vocal line in the treble clef and a bass line in the bass clef. The key signature is three flats (B-flat, E-flat, A-flat), and the time signature is 4/4. The vocal line begins with a treble clef and a key signature of three flats. The lyrics are written below the vocal line. The bass line begins with a bass clef and a key signature of three flats. The lyrics are written below the vocal line. The piece concludes with a double bar line and repeat dots. A "Rit..." marking is placed above the final measure of the vocal line.