

To Be There



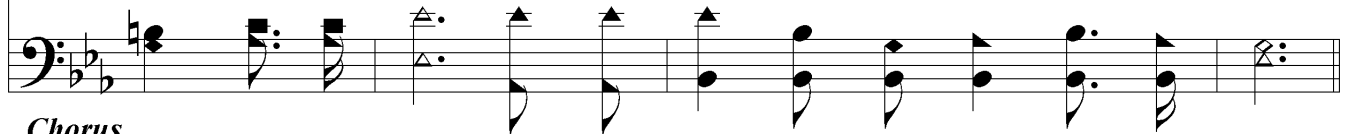
1. I have heard of a land far a - way, And its
 2. There are fore - tastes of heav - en be - low, There are
 3. In that noon - tide of glo - ry so fair, In the
 4. There the ran - somed with Je - sus a - bide In the



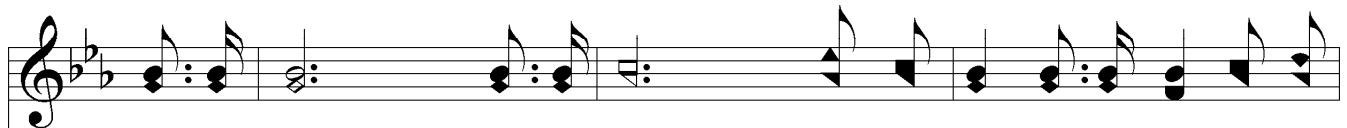
glo - ries no tongue can de - clare; But its beau - ty hangs
 mo - ments like joys of the blest; But the splen - dors no
 gleam of the riv - er of life, There are joys that the
 shade of the shel - ter - ing fold; Ev - er - more by Im -



o - ver the way, And with Je - sus I long to be there.
 mor - tal can know, Of the land where the wea - ry shall rest.
 faith - ful shall share; O how sweet - ly they rest from the strife!
 man - u - el's side, They shall dwell in the glo - ry un - told.



Chorus



To be there, to be there, And with Je - sus I long to be
 To be there, to be there,



To Be There

there; To be there, to be there, And with Je-sus I long to be there.
to be there To be there, to be there,

The image shows a musical score for the hymn "To Be There". It consists of two staves: a treble clef staff at the top and a bass clef staff at the bottom. The key signature is one flat (B-flat major or D minor), and the time signature is 4/4. The melody is written in the treble clef, and the bass line is in the bass clef. The lyrics are placed between the two staves, with the first line of lyrics aligned with the first measure of the melody and the second line of lyrics aligned with the second measure. The melody features a mix of eighth and quarter notes, with some measures containing rests. The bass line consists of quarter notes and eighth notes, providing a steady accompaniment. The score ends with a double bar line and repeat dots.