

Sweet Savior Mine

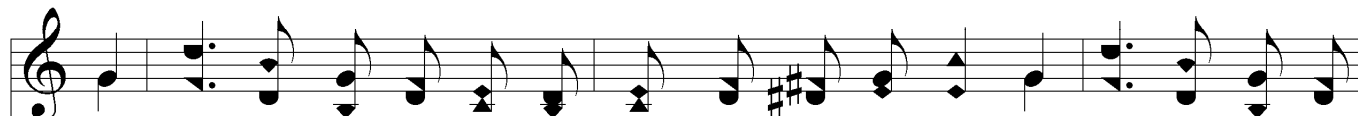


1. Sweet Sav - ior mine, so full, so free, Thy par-d'ning love has been to me;
2. Sweet Sav - ior mine, Thy feet to kiss In ser - vice low is high - est bliss;
3. Sweet Sav - ior mine, can I with - hold The tri - fling deed, the pal - try gold?



Were I pos - sessed of bound - less store, My heart would long to yield Thee more.
Oh, give to me one glance of Thine, And pain for Thee is joy di - vine.
Nay, low - ly at Thy feet I fall, Sweet Sav - ior mine, I give Thee all.

Chorus



The world is naught a - part from Thee, sweet Sav - ior mine, And cruds are king - ly



fare for me since I am Thine; My life, my all, to Thee I give,
My life, my all, to Thee I give, to Thee I give,



Sweet Sav - ior mine, for Thee to live. My life, my all, to Thee I
My life, my all, to Thee I



Sweet Savior Mine

give,
give, to Thee I give,
Sweet Sav - ior mine, for Thee to live.

The image shows a musical score for the hymn "Sweet Savior Mine". It consists of two staves: a treble clef staff at the top and a bass clef staff at the bottom. The treble staff contains the melody, starting with a treble clef and a key signature of one sharp (F#). The bass staff contains the bass line, starting with a bass clef and the same key signature. The lyrics are written below the notes. The first line of lyrics is "give, give, to Thee I give," and the second line is "Sweet Sav - ior mine, for Thee to live." The music is written in a simple, clear style with standard musical notation including notes, rests, and bar lines.