

Send The Light



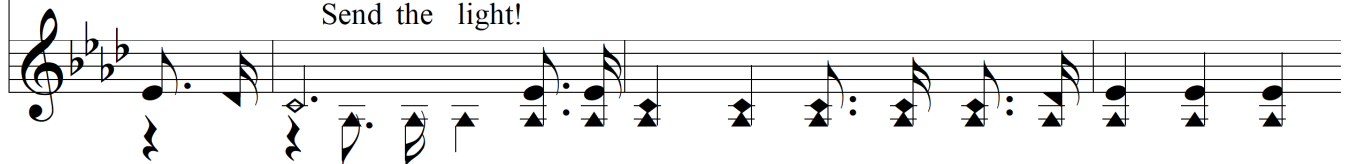
1. There's a call comes ring - ing o'er the rest - less wave: Send the light!
 2. We have heard the Mac - e - do - nian call to - day: Send the light!
 3. Let us pray that grace may ev - 'ry - where a - bound: Send the light!
 4. Let us not grow wea - ry in the work of love: Send the light!

Send the light!



Send the light! There are souls to res - cue, there are souls to save:
 Send the light! And a gold - en of - fring at the cross we lay:
 Send the light! And a Christ - like spir - it ev - 'ry - where be found:
 Send the light! Let us gath - er jew - els for a crown a - bove:

Send the light!



Chorus



Send the light! Send the light! Send the light! the
 Send the light! Send the light! Send the light! Send the light!



1. bless - ed gos - pel light; Let it shine from shore to
 the bless - ed gos - pel light; Let it shine



Send The Light

shore!
from shore to shore!

2.
shine
let it shine

for - ev - er - more.
for - ev - er - more.

The image shows a musical score for the hymn "Send The Light". It consists of two staves of music. The top staff is the vocal line, and the bottom staff is the piano accompaniment. The key signature has three flats (B-flat, E-flat, A-flat), and the time signature is 4/4. The first staff begins with a treble clef and a key signature of three flats. The melody starts with a half note G4, followed by quarter notes F4, E4, and D4, all under a slur. This is followed by a repeat sign. The second staff begins with a second ending bracket labeled "2.". The melody continues with a half note G4, followed by quarter notes F4, E4, and D4, all under a slur. The lyrics are: "shore! from shore to shore! shine let it shine for - ev - er - more. for - ev - er - more." The piano accompaniment consists of chords and single notes in the left hand, mirroring the vocal line's rhythm and pitch.