

# Resurrection Morn So Fair

*Slow and mournfully*



1. The day was dark and all seem'd lost when to the tomb They bore the form of
2. The stone be - fore the door was set and firm - ly seal'd- A guard was plac'd to
3. Oh, sad and lone - ly ones to - day, look up! re - joi - ce! The emp - ty tomb with

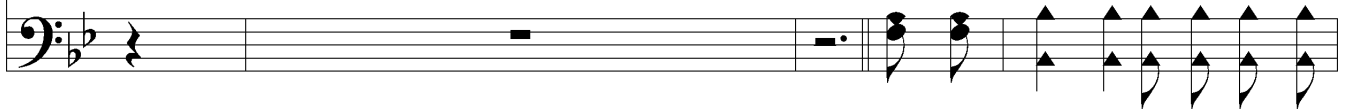


Christ the cru - ci - fied. Loved ones hoped that He should reign- But their hopes were all in vain,  
watch by night and day, For they fear'd that from the dead He would rise as He had said,  
prais - es may re-sound. O - ver moun-tain, hill and plain, Let there ring the glad re-frain,

*Chorus Brightly*



For they saw Him as up - on the cross He died.  
Or per - chance His own would spir - it Him a - way. But there dawned a res - ur - rec - tion  
Bring - ing hope and cheer wher - ev - er man is found.



morn so fair, When the Sav - ior rose from out the tomb: For the an - gels



came and rolled the stone a - way, And to - day is ban - ished all earth's gloom.

