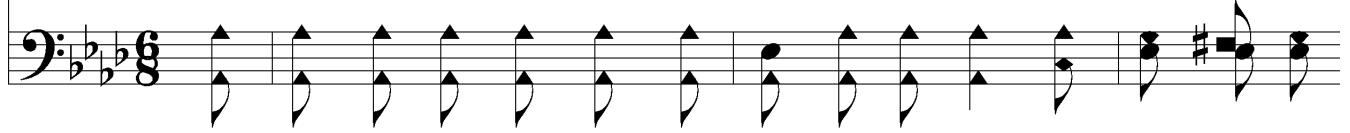


Oh, Suffer The Children



1. "Oh, suf - fer the chil - dren to come un - to Me," Sweet mes - sage of
2. "Oh, suf - fer the chil - dren to come un - to Me," The dear in - vi -
3. "Oh, suf - fer the chil - dren to come un - to Me, Of such is the



Je - sus, so full and so free, How dear - ly we cher - ish this
ta - tion from lands o'er the sea, In years long gone by were these
King - dom of Heav - en to be!" Lord Je - sus, we thank Thee and

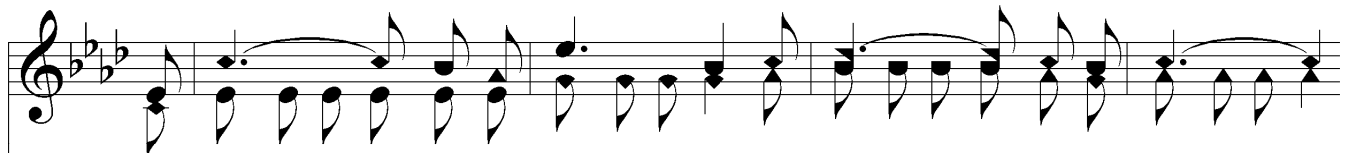


Rit...

proof of His love, That tells us our claim on His King - dom a - bove.
pre - cious words said, But by them to - day all the chil - dren are led.
give Thee our praise, We'll try to o - bey Thee thru child - hood's fair days.



Chorus



Then "Suf - fer the chil - dren to come un - to Me,
Then "Suf - fer the chil - dren to come un - to Me, Then suf - fer the chil - dren to come un - to Me,



Oh, Suffer The Children

Of such is the King - dom of Heav - en to be."
Of such is the King-dom of Heav-en to be, of such is the King-dom of Heav-en to be."

to be.

The image shows a musical score for the hymn "Oh, Suffer The Children". It consists of two staves: a treble clef staff at the top and a bass clef staff at the bottom. The key signature is three flats (B-flat, E-flat, A-flat), and the time signature is common time (C). The melody is written in the treble clef, and the bass line is in the bass clef. The lyrics are written between the two staves. The first line of lyrics is "Of such is the King - dom of Heav - en to be." and the second line is "Of such is the King-dom of Heav-en to be, of such is the King-dom of Heav-en to be." The word "to be." appears at the end of the second line of music.