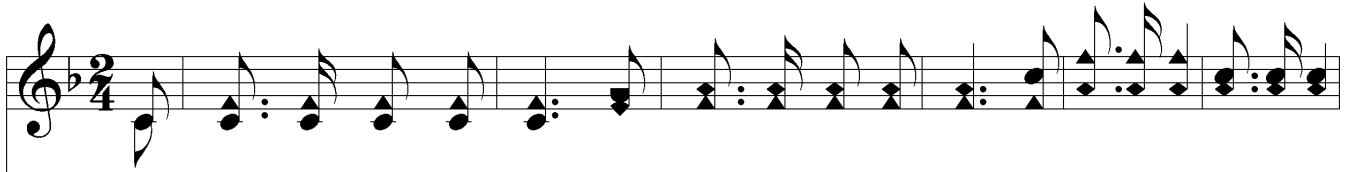


Loyalty To Christ



1. From o - ver hill and plain There comes the sig - nal strain, 'Tis loy - al - ty, loy - al - ty,
2. O hear, ye brave, the sound That moves the earth a - round, 'Tis loy - al - ty, loy - al - ty,
3. Come, join our loy - al throng, We'll rout the gi - ant wrong, 'Tis loy - al - ty, loy - al - ty,
4. The strength of youth we lay At Je - sus' feet to - day, 'Tis loy - al - ty, loy - al - ty,



loy - al - ty to Christ; Its mu - sic rolls a - long, The hills take up the song,
loy - al - ty to Christ; A - rise to dare and do, Ring out the watch - word true,
loy - al - ty to Christ; Where Sa - tan's ban - ners float We'll send the bu - gle note,
loy - al - ty to Christ; His gos - pel we'll pro - claim, Thru - out the world's do - main,



Of loy - al - ty, loy - al - ty, Yes, loy - al - ty to Christ. "On to vic - to - ry! On to



vic - to - ry!" Cries our great Com - mand - er "On!" We'll move at His com - mand,
our Com - mand - er; "On!"



Loyalty To Christ

The image shows a musical score for the hymn "Loyalty To Christ". It consists of two staves: a treble clef staff at the top and a bass clef staff at the bottom. The key signature is one flat (B-flat major or D minor). The melody is written in the treble staff, and the bass line is in the bass staff. The lyrics are written below the treble staff. The music ends with a double bar line and repeat dots.

We'll soon pos - sess the land, Thru loy - al - ty, loy - al - ty, Yes, loy - al - ty to Christ. A - men.