

Life's Railway To Heaven

Respectfully dedicated to the railroad men.

Tempo ad lib.



1. Life is like a moun-tain rail - road, With an en - gi - neer that's brave;
2. You will roll up grades of tri - al; You will cross the bridge of strife;
3. You will of - ten find ob - struc - tions; Look for storms of wind and rain:
4. As you roll a - cross the tres - tle, Span - ning Jor - dan's swell - ing tide,



We must make the run suc - cess - ful, From the cra - dle to the grave;
See that Christ is your con - duc - tor On this light - ning train of life;
On a fill, or curve, or tres - tle, They will al - most ditch your train;
You be - hold the Un - ion De - pot In - to which your train will glide;



Watch the curves, the fills, the tun - nels; Nev - er fal - ter, nev - er quail;
Al - ways mind - ful of ob - struc - tion, Do your du - ty, nev - er fail;
Put your trust a - lone in Je - sus; Nev - er fal - ter, nev - er fail;
There you'll meet the Su - per - inten - dent, God, the Fa - ther, God, the Son,

Rit...

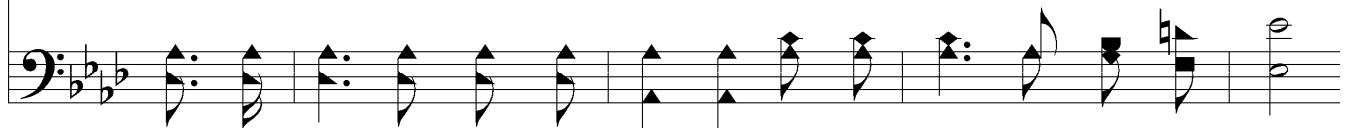


Keep your hand up - on the throt - tle, And your eye up - on the rail.
Keep your hand up - on the throt - tle, And your eye up - on the rail.
Keep your hand up - on the throt - tle, And your eye up - on the rail.
With the heart - y, joy - ous plau - dit, "Wea - ry pil - grim, wel - come home."

Chorus



Bless - ed Sav - ior, Thou wilt guide us, Till we reach that bliss - ful shore;



Where the an - gels wait to join us, In Thy praise for ev - er - more.

