

# Let The Golden Sunlight In

A $\flat$ /E $\flat$  - SOL



1. Let the gold - en sun - light shine in - to your heart, It will make you hap - py,  
2. Let the gold - en sun - light shine out from your face, If you have a sor - row  
3. Wel - come gold - en sun - light, shin - ing from a - bove, Won - der - ful in bright - ness,



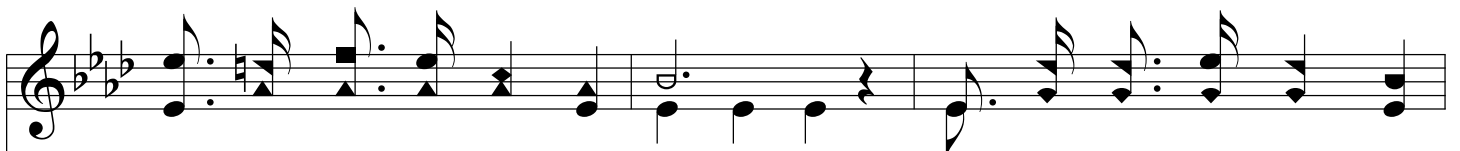
bless - ings will im - part; In the ear - ly morn - ing, with the day be - gin,  
joy will take its place; Bright - er days are com - ing as you con - quer sin,  
show - ing forth God's love, If your heart is bur - dened on ac - count of sin,



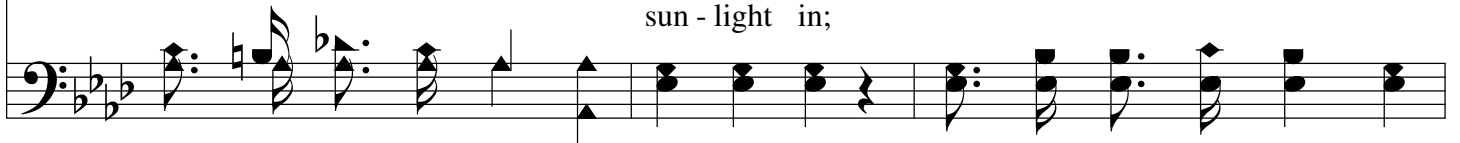
## Chorus



Let the gold - en sun - light in. Let the gold - en sun - light in,  
sun - light in,



Let the gold - en sun - light in; Bright - en up the path - way,  
sun - light in;



# *Let The Golden Sunlight In*

The image shows a musical score for the hymn "Let The Golden Sunlight In". It consists of two staves: a treble clef staff for the melody and a bass clef staff for the accompaniment. The key signature is three flats (B-flat, E-flat, A-flat), and the time signature is common time (C). The melody is written in a simple, hymn-like style with quarter and eighth notes. The lyrics are printed below the treble staff, with some words split across lines. The accompaniment consists of chords and single notes in the bass line.

in this world of sin, Let the gold - en sun - light in.  
sun - light in.