

# Lend A Hand



1. In this world where sin is so ap - pal - ling, By the way - side souls are  
 2. While the pre - cious hours so swift are fly - ing, While the souls of men in  
 3. Hear the voice of Je - sus soft - ly say - ing: If ye love me, go, the  
 4. Think what joy when on the gold - en land - ing, When be - side our bless - ed



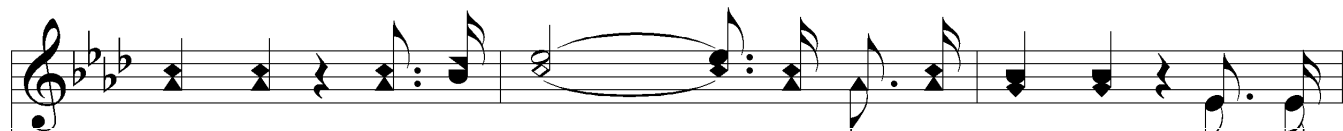
dai - ly fall - ing For the help that you can give they're call - ing;  
 sin are dy - ing, Do not say there is no use in try - ing;  
 cost not weigh - ing, True dis - ci - ples be, my word o - bey - ing;  
 Lord we're stand - ing, Safe at home with all the ran - somed band - ing;



## Chorus



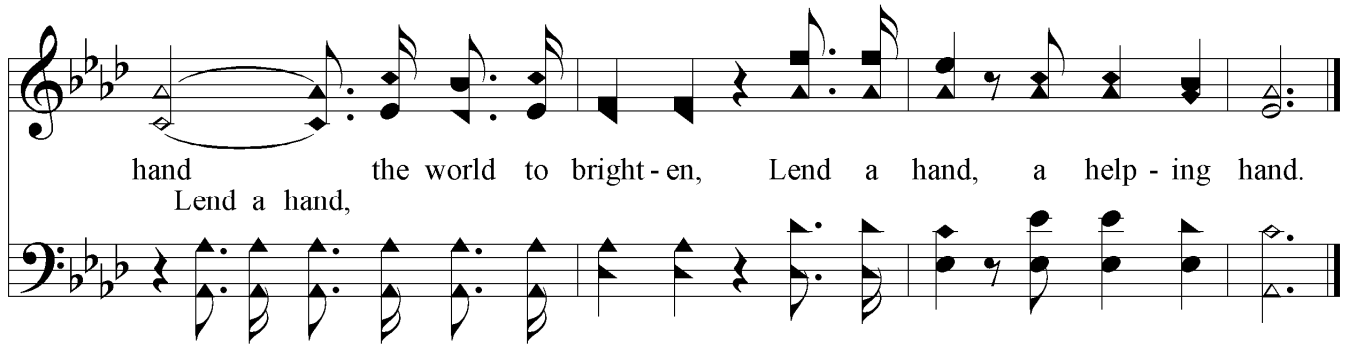
Lend a hand, a help - ing hand. Lend a hand the wrongs to  
 Lend a hand



right - en, Lend a hand the load to light - en; Lend a  
 Lend a hand



# Lend A Hand



hand the world to bright-en, Lend a hand, a help-ing hand.  
Lend a hand,

The image shows a musical score for the hymn "Lend A Hand". It consists of two staves: a treble clef staff on top and a bass clef staff on the bottom. The key signature has three flats (B-flat, E-flat, A-flat), and the time signature is 4/4. The melody is written in the treble staff, and the bass line is in the bass staff. The lyrics are placed between the two staves, with "hand" under the first measure, "Lend a hand," under the second measure, and "the world to bright-en, Lend a hand, a help-ing hand." under the remaining measures. The piece concludes with a double bar line.