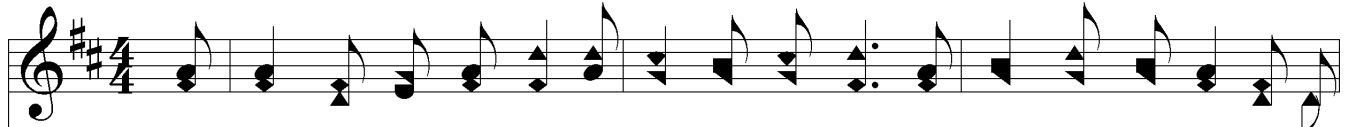


# Keep Close To Jesus



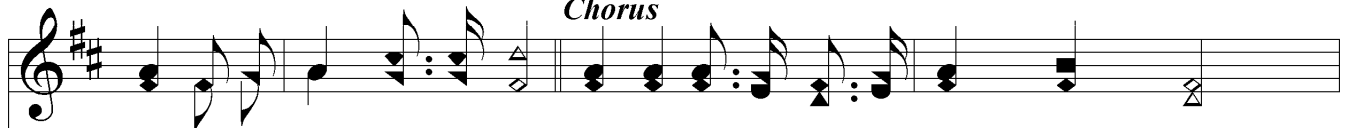
1. Tho' friends may de-ceive me and trou-bles draw nigh, Tho' dark clouds may gath-er a-  
 2. In ev - 'ry temp - ta - tion I know He is near, With words of com-pas-sion to  
 3. In sun - shine and show - er by me doth He stand, Each day I am un - der His



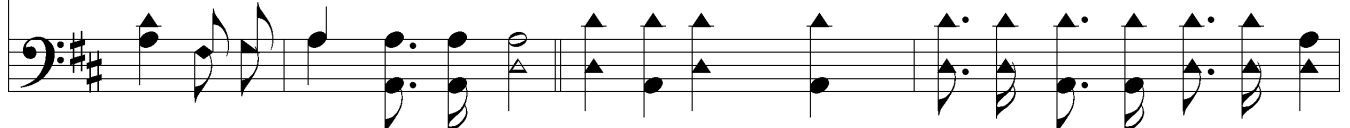
bove in the sky; When ly - ing be - fore me the path - way looks dim, I can nev - er  
 com - fort and cheer; He sets a bright rain - bow where shad - ows look grim, And sus - tain - ing  
 shel - ter - ing hand; My cup of re - joic - ing He fills to the brim, Giv - ing me a



## Chorus



fear, if I keep close to Him. Close to Je - sus thru the night and day,  
 grace, if I keep close to Him. Close to Je - sus thru the night and thru the day,  
 song, it I keep close to Him.



Close to Je - sus all a - lone the way; What tho' the heav - ens a -  
 Close to Je - sus all a - long the nar - row way;



bove me look dim, I am safe and hap - py if I keep close to Him.

