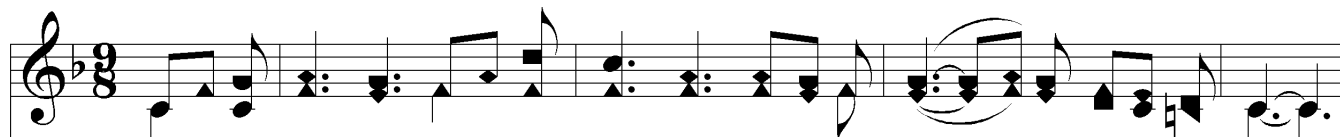
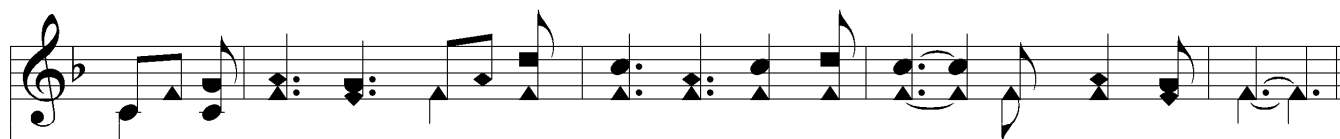
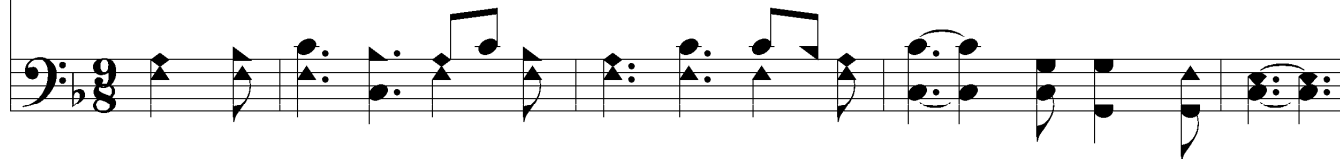


# Jesus, Savior, We Would See Thee

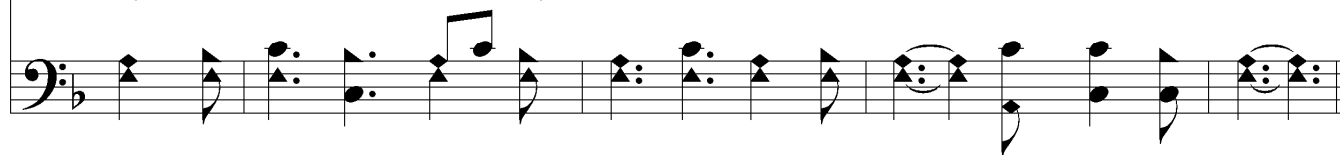
"We would see Jesus." – John 12:21



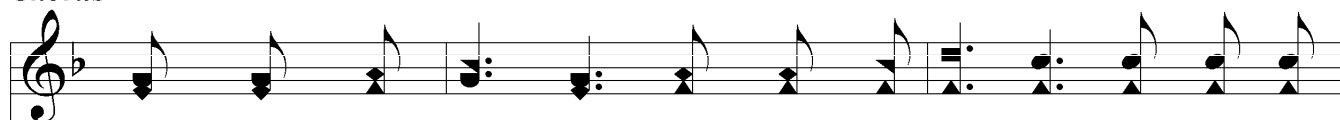
1. Je - sus, Sav - ior, we would see Thee, Lift - ed high up - on the tree;  
2. Je - sus, Teach - er, we would hear Thee, Hear Thy voice and it a - lone:  
3. Je - sus, Mas - ter, we would serve Thee, Fill each day with lov - ing deeds;  
4. See - ing, hear - ing, learn - ing, speak - ing, Serv - ing dai - ly, faith - ful - ly;



Bear - ing there our sins and sor - rows, Set - ting us for - ev - er free.  
Learn the les - sons Thou wouldst teach us, Speak the words that Thou wilt own.  
Com - fort those whose hearts are wea - ry, Like Thy - self sup - ply their needs.  
May men see in us, Thy breth - ren, All that Thou wouldst have us be.



## Chorus



We would see Je - sus, we would see Je - sus; He is our



Sav - ior, and glo - rious King; Him would we fol - low, thru sun - shine and



# *Jesus, Savior, We Would See Thee*

shad - ow; Now and for - ev - er His prais - es will sing.

The image shows a musical score for the hymn "Jesus, Savior, We Would See Thee". It consists of two staves: a treble clef staff on top and a bass clef staff on the bottom. The treble staff contains a melody line with notes and rests, and the bass staff contains a bass line with notes and rests. The lyrics "shad - ow; Now and for - ev - er His prais - es will sing." are written below the treble staff, aligned with the notes. The music is in a common time signature and features a mix of quarter, eighth, and half notes, with some notes beamed together. The piece concludes with a double bar line.