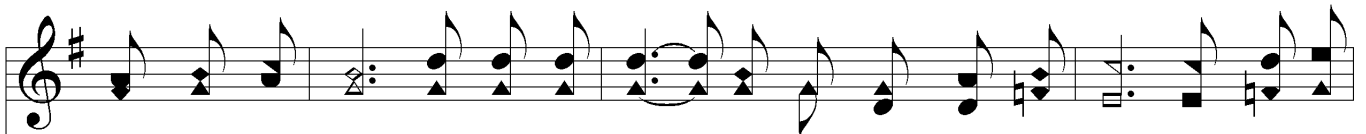


Jesus, My Savior, To Bethlehem Came

HE CAME FOR ME



1. Je - sus, my Sav - ior, to Beth - le - hem came, Born in a man - ger to
2. Je - sus, my Sav - ior, on Cal - va - ry's tree, Paid the great debt and my
3. Je - sus, my Sav - ior, the same as of old, While I did wan - der a -
4. Je - sus, my Sav - ior, shall come from on high, Sweet is the prom - ise as



sor - row and shame; Oh, it was won - der - ful, blest be His name, Seek - ing for
soul He set free; Oh, it was won - der - ful, how could it be? Dy - ing for
far from the fold; Gen - tly and long He has plead with my soul, Call - ing for
wea - ry years fly; Oh, I shall see Him de - scend - ing the sky, Com - ing for



Chorus



me, Seek - ing for me.
me, Dy - ing for me. Seek - ing for me, Dy - ing for
me, Call - ing for me.
me, Com - ing for me.
(1. Seek - ing for me.)



me, Call - ing for me, Com - ing for me; Oh, it was won - der - ful,



Jesus, My Savior, To Bethlehem Came

blest be His name, Seek - ing for me, Seek - ing for me.
Seek - ing for me,

The image shows a musical score for the hymn "Jesus, My Savior, To Bethlehem Came". It consists of two staves: a treble clef staff on top and a bass clef staff on the bottom. The key signature is one sharp (F#), and the time signature is 4/4. The melody is written in the treble clef, and the bass line is in the bass clef. The lyrics are placed below the treble staff. The first line of lyrics is "blest be His name, Seek - ing for me, Seek - ing for me." The second line of lyrics is "Seek - ing for me,". The music ends with a double bar line.