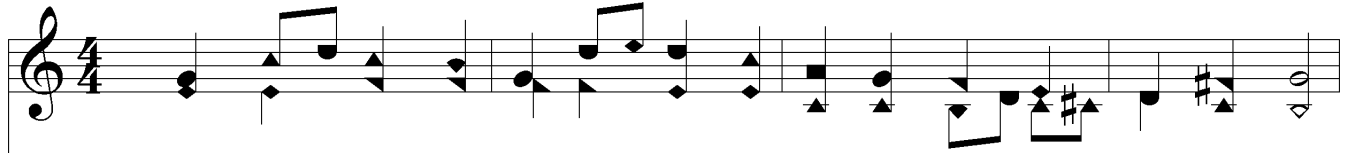
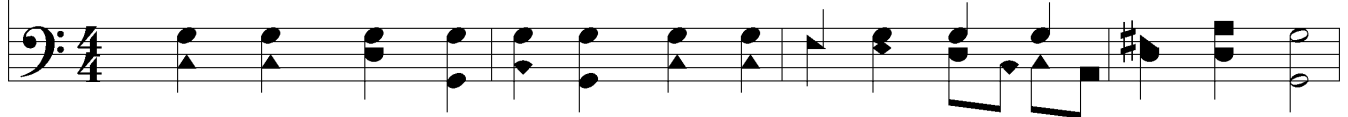


God Is Love



1. God is love: His mer - cy bright - ens All the path in which we rove;
2. Chance and change are bus - y ev - er; Man de - cays, and ag - es move;
3. E'en the hour that dark - est seem - eth Will His change - less good - ness prove;
4. He with earth - ly care en - twin - eth Hope and com - fort from a - bove;



Bliss He wakes and woe He light - ens: God is wis - dom, God is love.
But His mer - cy wan - eth nev - er: God is wis - dom, God is love.
From the gloom His bright ness stream - eth: God is wis - dom, God is love.
Ev - 'ry - where His glo - ry shin - eth: God is wis - dom, God is love.

