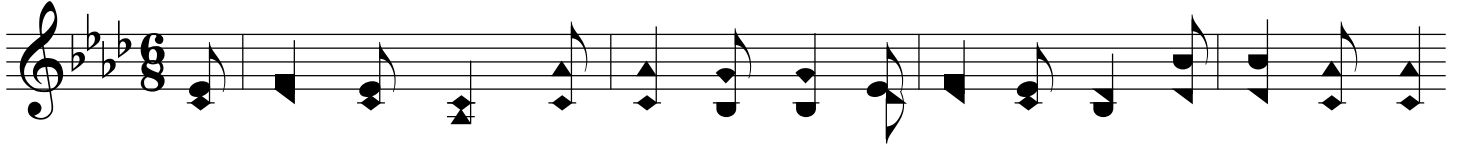


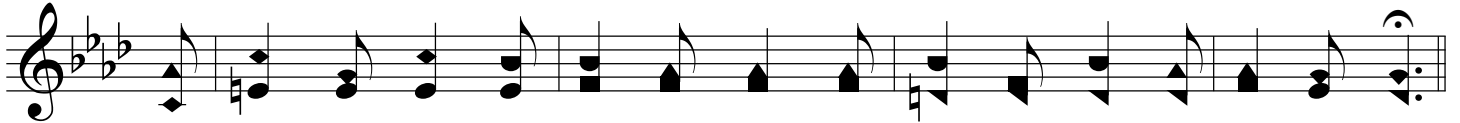
Casting All Your Care Upon Jesus

A \flat /E \flat - SOL

Isa, 53:4, 1 Peter 5:7



1. O bless - ed rest, when we re - cline On nev - er fail - ing pow'r di - vine,
2. Al - might - y strength! but strong - er yet The love that can - not us for - get:
3. Be - yond the moun - tain peaks that rise A - bove the clouds and pierce the skies,
4. Who trusts His word hath clear - est sight, Who trusts His pow'r hath great - est might;
5. Man fail - eth man in trou - ble's hour, As fails at noon the fee - ble pow'r,



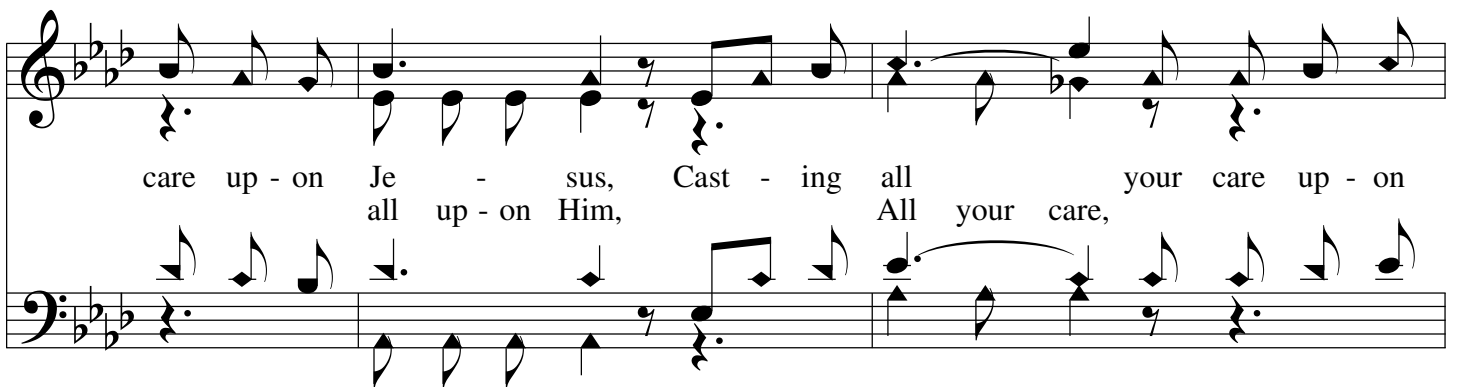
God's might - y arms en - fold - ing us, The arms that hold the u - ni - verse!
Un - fath - om'd o - cean, calm and broad! A - maz - ing mer - cy of our God!
Look up! the high - est won - der see, - God's love that fills e - ter - ni - ty.
Who trusts His love doth nev - er bear The heart of doubt, the brow of care.
Who trusts in God, here and a - far Shines on, tho' fail - eth sun and star.

Chorus

Moderato



Cast - ing all your care up - on Je - sus, Cast - ing all your
All your care, all up - on Him, All your care,



care up - on Je - sus, Cast - ing all your care up - on
all up - on Him, All your care,

Casting All Your Care Upon Jesus

Je - sus, For He car - eth, He car - eth for you. *p*
all up - on Him, for you.

The image shows a musical score for the hymn "Casting All Your Care Upon Jesus". It consists of two staves: a treble clef staff on top and a bass clef staff on the bottom. The key signature is three flats (B-flat, E-flat, A-flat), and the time signature is 4/4. The melody is written in the treble clef, and the bass line is in the bass clef. The lyrics are written below the treble staff. The first line of lyrics is "Je - sus, For He car - eth, He car - eth for you." and the second line is "all up - on Him, for you." The word "p" (piano) is written above the final measure of the treble staff. The music ends with a double bar line.