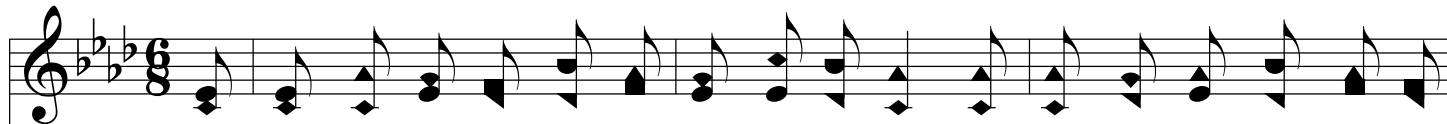


Believe On The Crucified One

Ab/Eb - SOL



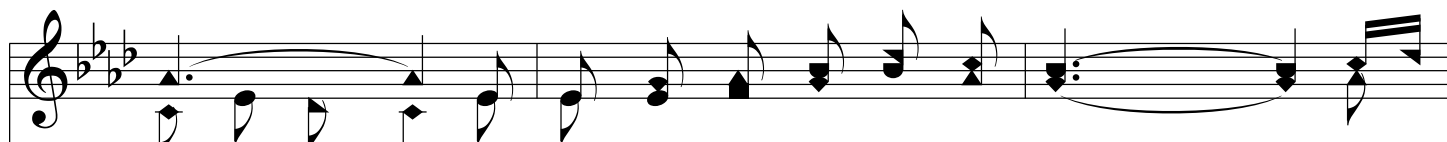
1. Oh! why will you turn from the Sav - ior a - way? He's call - ing you ten - der - ly,
2. He pleads by the an - guish He suf - fered for thee, By nail - prints that bound Him to
3. Why wan - der a - way in the dark - ness a - far? You've on - ly to knock, for the



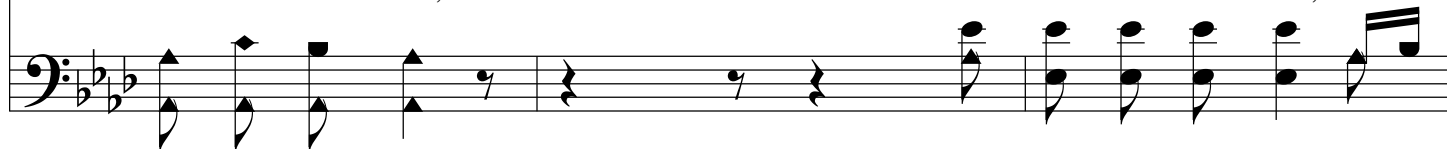
call - ing to - day; There's on - ly one ref - uge from death and the grave, That
Cal - va - ry's tree; By vic - to - ry o - ver the grave and its gloom, Oh,
door is a - jar; Come quick - ly and give Him your heart while you may, Oh,



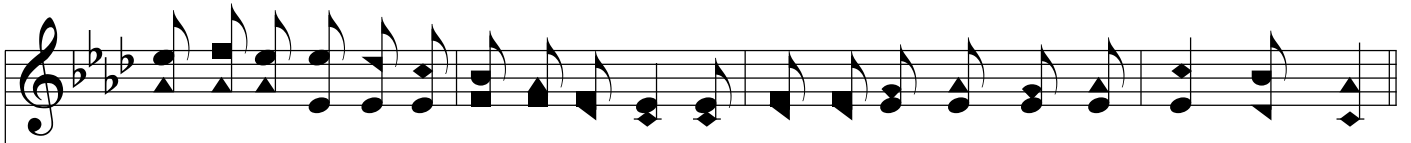
ref - uge is Je - sus, the might - y to save. Be - lieve on the cru - ci - fied
sin - ner, be - lieve Him, He's call - ing you, - come! The
haste to re - ceive Him, He's wait - ing to - day. The



One, Be - lieve on the cru - ci - fied One; No
cru - ci - fied One, the cru - ci - fied One;



Believe On The Crucified One



long-er de-lay, He is call-ing to-day, He waits to re-ceive you, come home, come home.

